



**BOLDER.
BRAVER.
READY.**

ANNUAL FUND CAMPAIGN



Dear WIC Supporter,

We are growing! In numbers and in physical space. Thank you for your past generosity and thank you in advance for your continued support of West Island College (WIC). Our aim is to always live up to our motto: Be Bold. Be Brave. Be Ready.

These are exciting times at WIC! We have many plans for the upcoming year, and we need your support to bring these plans to fruition. To continue propelling forward and creating a school of academic excellence that features innovative learning opportunities and spaces, we are excited to launch our:

BOLDER. BRAVER. READY. Annual Fund Campaign.

[CLICK TO DONATE](#)

Please read this brochure for details about our 2022/23 Annual Fund Campaign projects. WIC continually endeavours to provide incredible opportunities for its students, along with the highest quality education and facilities for learning. To do this, we need your help!


While tuition fees cover the core educational and operational components of the school, your generous support allows us to provide new and innovative opportunities and enhanced facilities for our students.

Our four areas of focus are:




Get Growing!

[click for details](#)



Sound Off!

[click for details](#)



For the Love of Music!

[click for details](#)



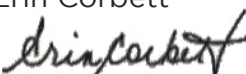
From the Heart!

[click for details](#)

WIC is grateful to the Siebens family for challenging our community and beyond to give to the Annual Fund. All gifts will be matched up to \$25,000. This kind gesture moves us closer to our fundraising goals.

Thank you. Your support to enhance the student experience at WIC is needed and appreciated.

With gratitude,

Erin Corbett

Head of School and CEO

Kim Anthony

Interim Director of Development

GET GROWING!

Thanks to Sprung Structures, our new greenhouse is now up and running! We are excited to '**Get Growing**' and need your help to realize the potential of this amazing space.

We envision **a multi-purpose educational greenhouse** where:

- Students can grow fruits, vegetables and herbs that will be used to prepare food in the cafeteria;
- Students and teachers can access a living classroom garden year-round;
- Teachers can fully integrate hands-on learning in the greenhouse and take advantage of alternative learning opportunities; and
- Critical math and science topics can be taught including building design, principles of biology, energy transfer and globally responsible farming.

To provide these unique learning experiences to our students, there are many needs. Here are some items that are required:

- Safety equipment;
- Installation of wash basins and bays;
- Storage locker; and
- Plants, landscaping and decking.

Donating to this fund will allow WIC to continue offering learning opportunities beyond the classroom walls. Let's '**Get Growing**'!

GOAL
\$40,000



[CLICK TO DONATE](#)

WIC
WEST ISLAND COLLEGE

A group of students in school uniforms are sitting around a long table in a large hall. The hall is decorated with many international flags hanging from the ceiling. The students are smiling and looking at each other.

SOUND OFF! IN THE HALL OF NATIONS

The Hall of Nations (HON) is a key gathering place for the WIC community. Staff, students and guests alike enjoy meals and quality time together in the HON.

In addition to weekly student assemblies, WIC also hosts important events and meetings in this space.

Over time, it has become increasingly evident that the sound system in the HON must be improved. Due to its age and other factors, the current sound system makes it difficult to hear presentations in certain parts of the HON. Being an inclusive school, we must ensure that every attendee at every assembly or event has a positive experience, including the ability to easily hear presentations.

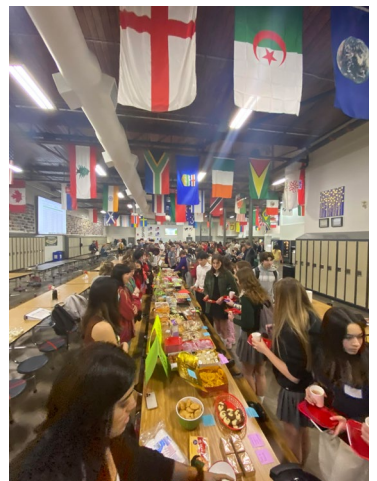
The following items are needed to improve the sound in the HON:

- New speakers; and
- Wireless microphones.

Donating to this fund will allow WIC to improve the sound in the HON so that all presentations can be heard, elevating the experience in that space. ***Sound Off! in the Hall of Nations.***

CLICK TO DONATE

GOAL
\$20,000



FOR THE LOVE OF MUSIC!

GOAL
\$100,000

Research shows that music positively impacts a student's academic performance while helping them to develop social skills. It also provides an outlet for creativity that is crucial to their development.

The WIC band program continues to grow and evolve – that is great news! But there are added costs to growth, and we need your help to accommodate this growth.

Our wish is to enhance and add to our band program by:

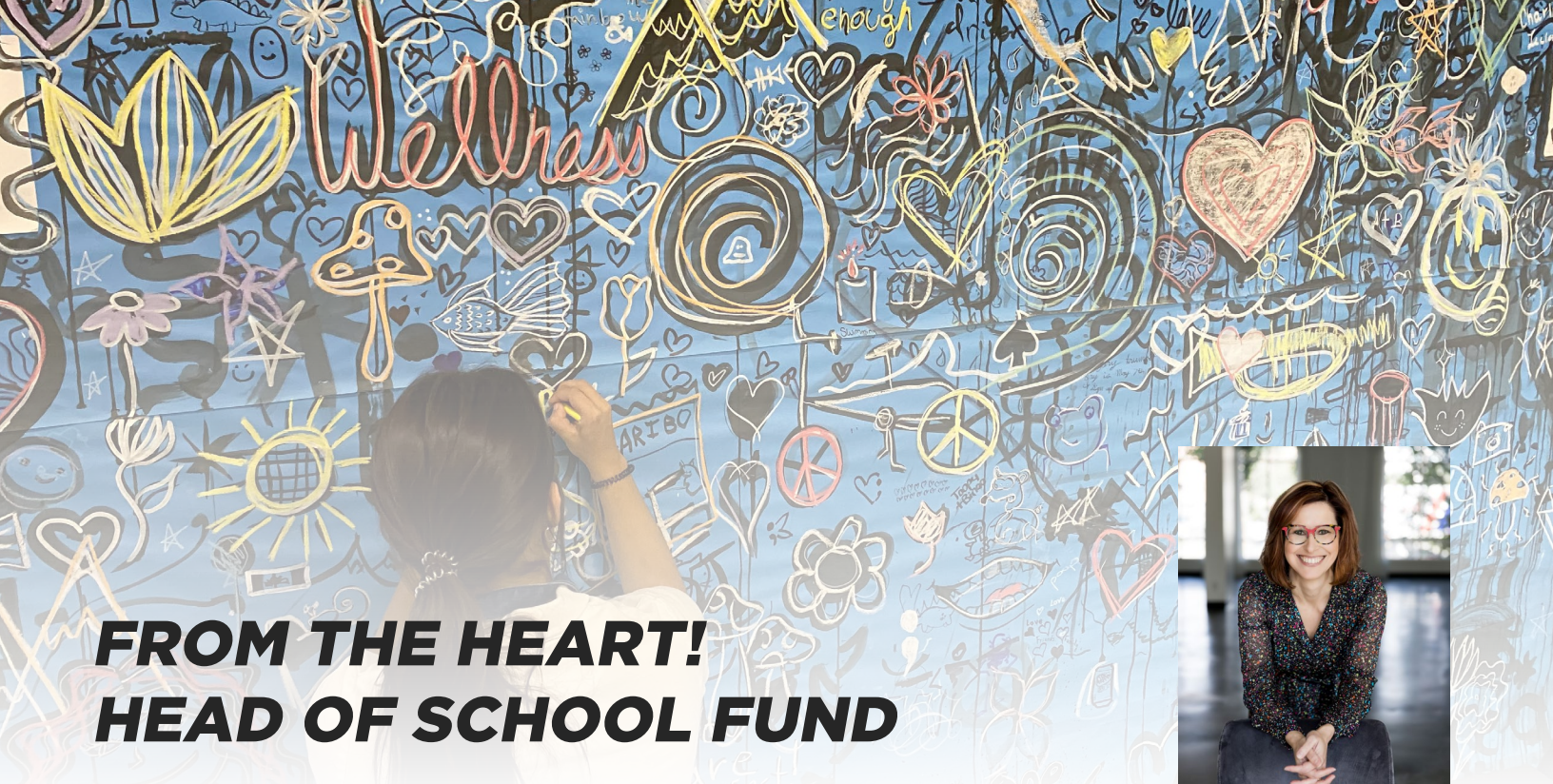
- Constructing soundproof rehearsal rooms;
- Purchasing a portable PA system;
- Purchasing a bassoon to add to our wood wind instruments collection; and
- Commissioning a musical piece to be performed by the WIC band.

Donating to this fund will allow students to continue developing their musical talent and grow as students and musicians. ***For the Love of Music!***

[CLICK TO DONATE](#)

**CLICK TO SEE OUR GRADE 7
STUDENTS EXPERIENCE THEIR
FIRST BAND INSTRUMENTS**

WIC students perform at Jack Singer Concert Hall



FROM THE HEART! HEAD OF SCHOOL FUND

We are always grateful to receive donations aimed at strategic investments at WIC. These donations would include such initiatives as student awards, providing financial aid to help WIC families experiencing temporary financial hardship and the amazing plans for a multimedia and computer science project.

Donating to this fund will allow WIC to fulfill other key projects and initiatives in our school community. ***From the Heart! Head of School Fund***



[CLICK TO DONATE](#)



WIC

WEST ISLAND COLLEGE

Thank you!

Your support is greatly appreciated.

Please return in an enclosed envelope to West Island College or give online.

YOUR GIFT TO THE 2022/23 ANNUAL FUND

- ☐ I/we would like to make a one-time donation of:
- ☐ \$250 ☐ \$500 ☐ \$1,000 ☐ \$5,000 ☐ Other \$ _____
- ☐ I/we would like to make a monthly gift of:
- ☐ \$25 ☐ \$50 ☐ \$100 ☐ \$250 ☐ Other \$ _____
- ☐ I/we would like to make an annual gift of: \$_____ for _____ years
- ☐ My/our gift is eligible for matching funds through my employer

Payment Options:

- ☐ Cheque payable to
West Island College Society of Alberta
- ☐ Give online
wicyyc.ca

My Information:

Name(s) as I/we would like it to appear for recognition purposes.
Annual Fund donors will be recognized by name in alphabetical order.

- ☐ I/we would like to remain anonymous. My/our name will not appear in print or digital media.

Address

City/Province

Postal Code

Home Phone

Cell Phone

Email Address

West Island College Society of Alberta
Charitable Registration #105645212 RR0001

Thank you for supporting WIC and our students!
Because of you, they will be:



CLICK TO DONATE

To learn more about these initiatives and how you can help, please contact:

Kim Anthony, CFRE

Interim Director of Advancement

Cell: (403) 816-1953

Email: kimanthony@mywic.ca

